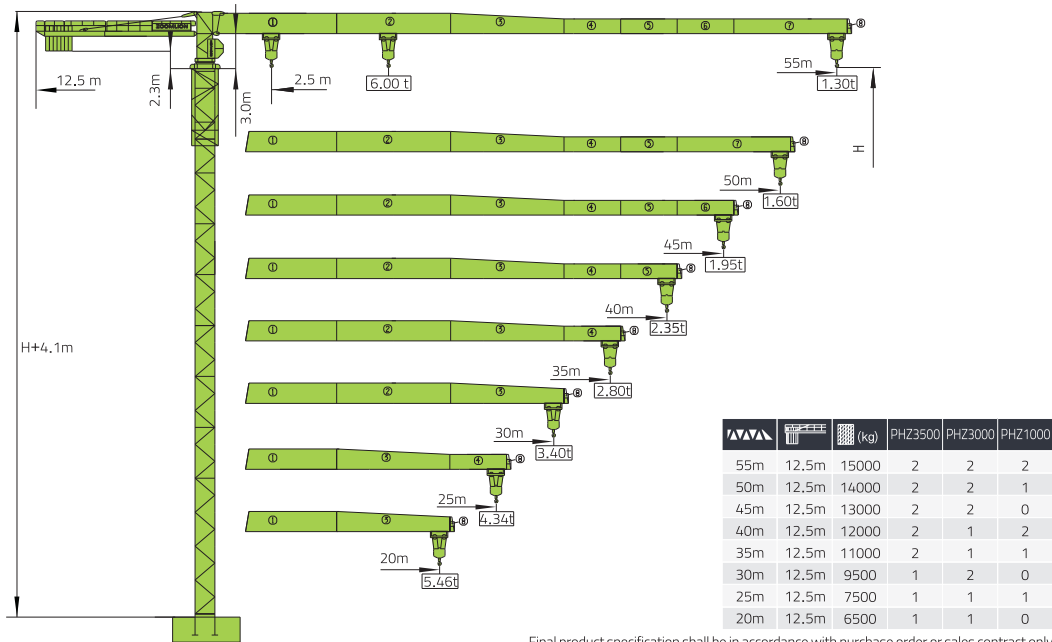
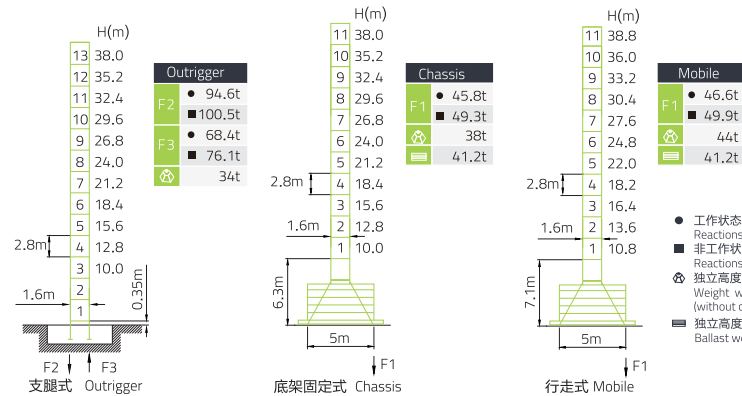


# T5513-8

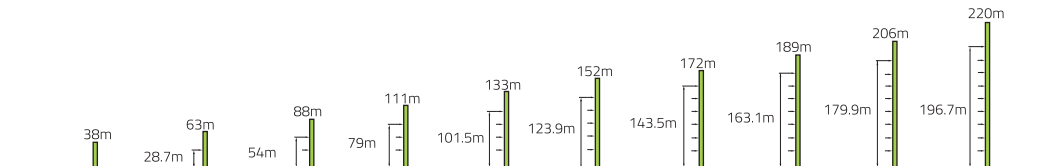


Final product specification shall be in accordance with purchase order or sales contract only

## 塔身 Masts / 反力 Reactions / T5513-8A

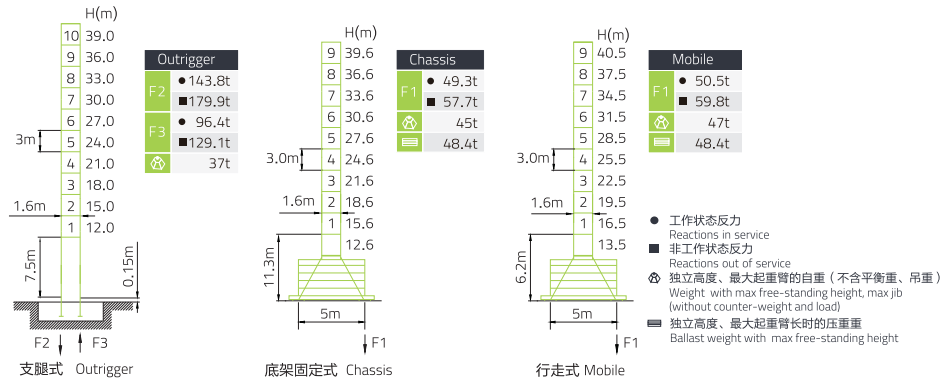


## 附着 Anchorages / T5513-8A

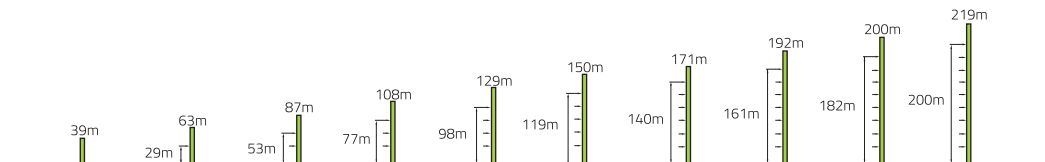


# T5513-8

## 塔身 Masts / 反力 Reactions / T5513-8F



## 附着 Anchorages / T5513-8F








## 起重特性 Load Diagrams

R(m)		Max.Capacity m/t	20.0	22.5	25.0	27.5	30.0	32.5	35.0	37.5	40.0	42.5	45.0	47.5	50.0	42.5	55.0
55.0 (R=56.0)	bd	2.5~23.5/4.00	4.00	3.70	3.30	2.96	2.68	2.44	2.23	2.04	1.88	1.74	1.61	1.50	1.39	1.30	
	☼☼	2.5~12.8/8.00	4.76	4.13	3.63	3.23	2.89	2.61	2.37	2.16	1.97	1.81	1.67	1.54	1.43	1.32	1.23
50.0 (R=51.0)	bd	2.5~24.5/4.00	4.00	3.91	3.49	3.13	2.84	2.58	2.36	2.17	2.00	1.85	1.72	1.60			
	☼☼	2.5~13.4/8.00	5.02	4.36	3.84	3.42	3.06	2.77	2.51	2.29	2.10	1.93	1.78	1.65	1.53		
45.0 (R=46.0)	bd	2.5~25.5/4.00	4.00		3.65	3.28	2.97	2.71	2.48	2.28	2.11	1.95					
	☼☼	2.5~13.9/8.00	5.24	4.56	4.02	3.58	3.21	2.90	2.64	2.41	2.21	2.04	1.88				
40.0 (R=41.0)	bd	2.5~26.0/4.00	4.00		3.75	3.37	3.06	2.79	2.55	2.35							
	☼☼	2.5~14.2/8.00	5.38	4.68	4.13	3.68	3.30	2.99	2.72	2.48	2.28						
35.0 (R=36.0)	bd	2.5~26.1/4.00	4.00		3.76	3.39	3.07	2.80									
	☼☼	2.5~14.3/8.00	5.41	4.71	4.15	3.69	3.32	3.00	2.73								
30.0 (R=31.0)	bd	2.5~26.2/4.00	4.00		3.78	3.40											
	☼☼	2.5~14.3/8.00	5.43	4.72	4.16	3.71	3.33										
25.0 (R=26.0)	bd	2.5~27.1/4.00	4.00														
	☼☼	2.5~14.8/8.00	5.64	4.91	4.33												
20.0 (R=21.0)	bd	2.5~27.5/4.00	4.00														
	☼☼	2.5~15.0/8.00	5.73														

# T5513-8

■ 传动机构 Mechanisms

配置 Configuration		b.d		b.d		kW		
		IV	V	IV	V			
 起升 Hoisting	QE880D	m/min	40	80	20	40	30/30	400m(6 layers)
		t	4	2	8	4		
 回转 Slewing	HVV95F1.130A	r/min	0~0.6			95N.m	① 超出咨询我们 Consultus if overtop	
 变幅 Trolleying	BP40B	m/min	0~55			4.0		
 行走 Travelling	ZA52-D B52-D	m/min	0~25			2×5.2		
	380V(±10%)50Hz	39.5+2×5.2kW						